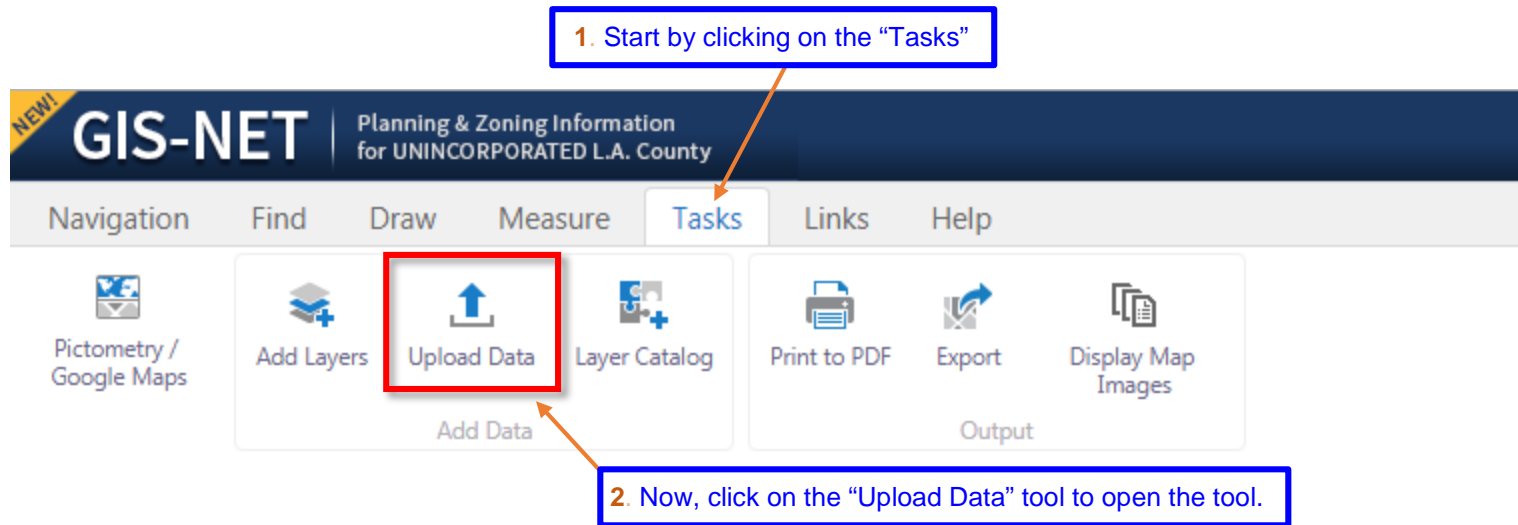
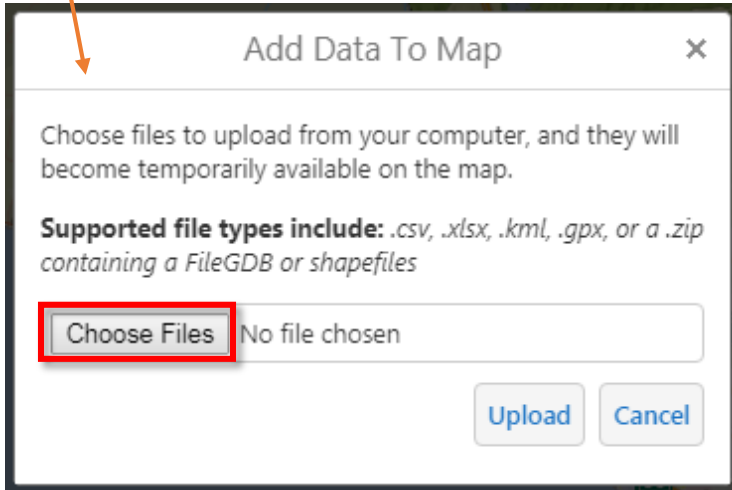


How to add data using Upload Data

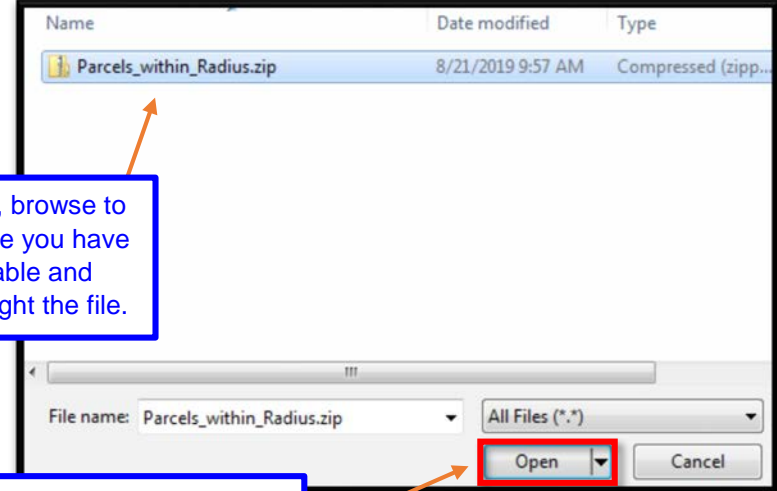


Note: The Upload Data tool is provided for importing ad-hoc data or layers into GIS-NET. This tool provides an option for users to add data to the application on demand. This is a way to get access to layers not currently in the data repository by adding them into the application for the current session. The application will support these file types: .csv, .xlsx, .kml, .gpx, or a .zip containing a FileGDB (.gdb) or shapefiles (.shp).

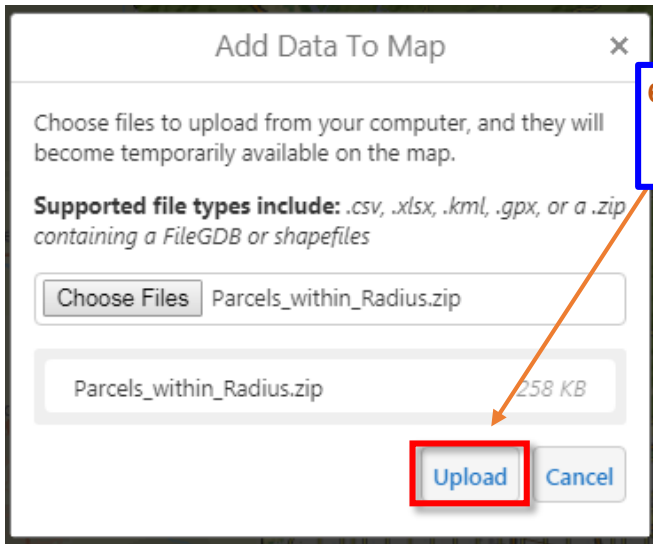
3. Choose the file you would like to add into GIS-NET by clicking the "Choose Files" button. The supported file types are listed for reference.



4. Next, browse to the file you have available and highlight the file.

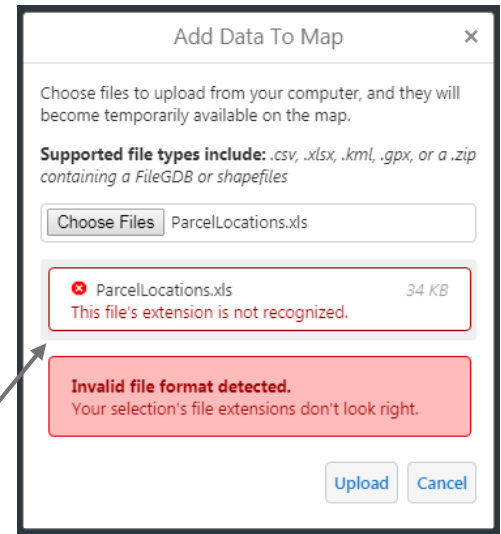


5. Click "Open". If the file is an accepted file type you will be able to proceed. If not, it will provide you an error message. *See Note Below.*



6. Click "Upload", once you have selected your supported file type.

Unsupported File Type Notes: If you choose an unsupported file type, the tool will provide you an error message. '.kmz' files are not supported, you should change extension to a '.zip' to unzip and get the '.kml' file to use. '.xls' is not supported and should either be saved as '.csv' or '.xlsx' file.



6a. Additional step for uploading a .csv or .xlsx (skip to step 7 if uploading other file type): Once the table is uploaded the next step will be to update the required fields highlighted below in red. Coordinates such as X and Y must be mapped to table columns. Select the correct coordinate system/spatial reference based on the uploaded columns. Scroll down and click "Confirm".

Table Mapping Details

Please select a mapping mode:
 Spatial Coordinates

X Axis Column:
CENTER_LON

Y Axis Column:
CENTER_LAT

Spatial Reference:
WGS 1984 (WKID 4326)

Use first row as header

OBJECTID	AIN	APN	SitusHouseNo	SitusFraction	SitusDirection	Situ
621790	6004009027	6004-009-027	841		W	

Confirm Cancel

6b. Confirmation: The count of records that were either rejected or passed during validation will be provided. Click "Done".

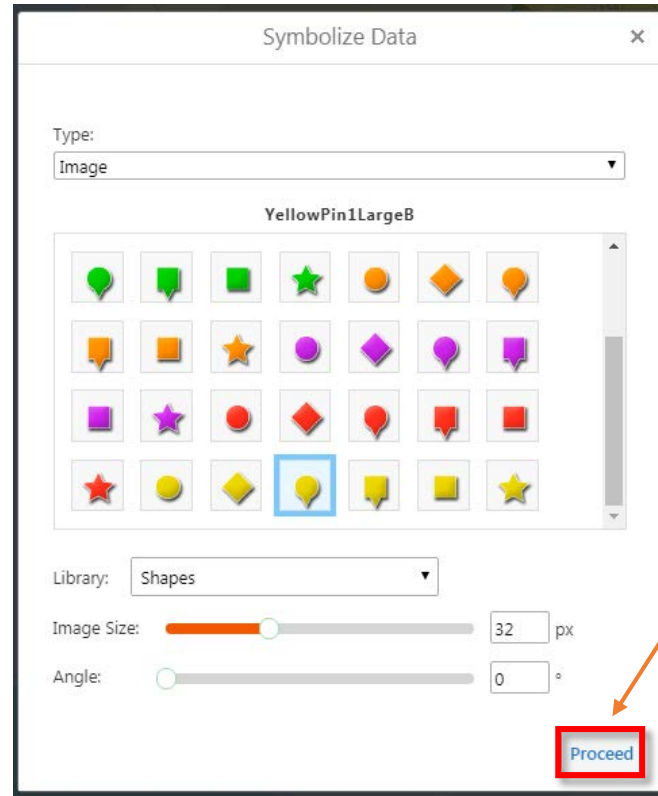
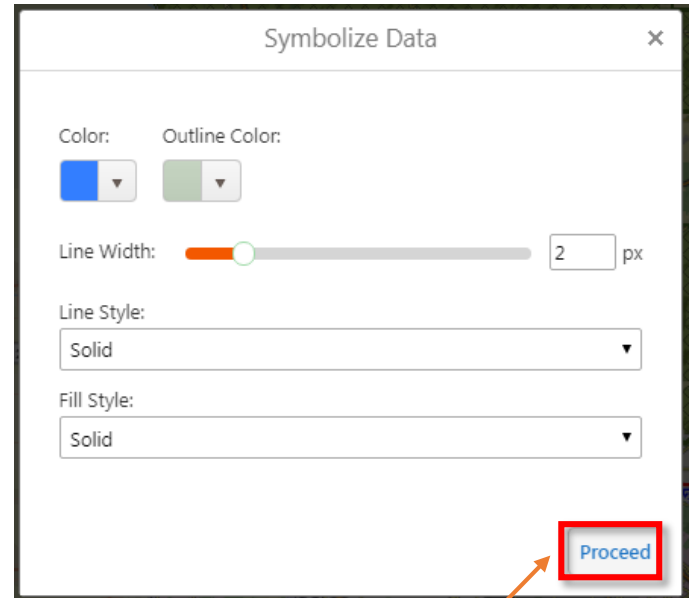
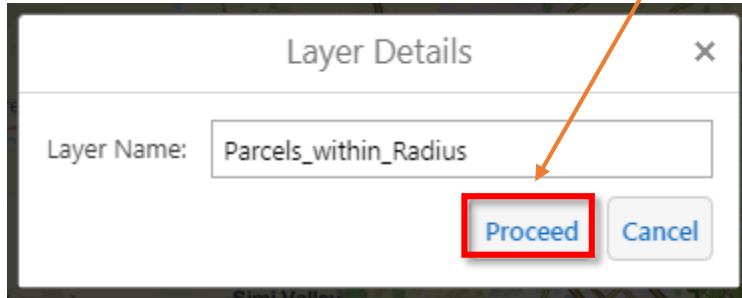
Table Record Results

! 0 record(s) were rejected.

✓ 3 passed.

Done

7. Once the layer is uploaded it will populate as the same file name when first uploaded, you can also rename it as needed. Click "Proceed" to continue.



8. Choose the desired symbology for the uploaded feature(s). This can also be left as default and updated after the upload process. Click "Proceed" to continue and the layer will be added to the map view.

Note: Depending on the file type uploaded you could have different "Symbolize Data" options.

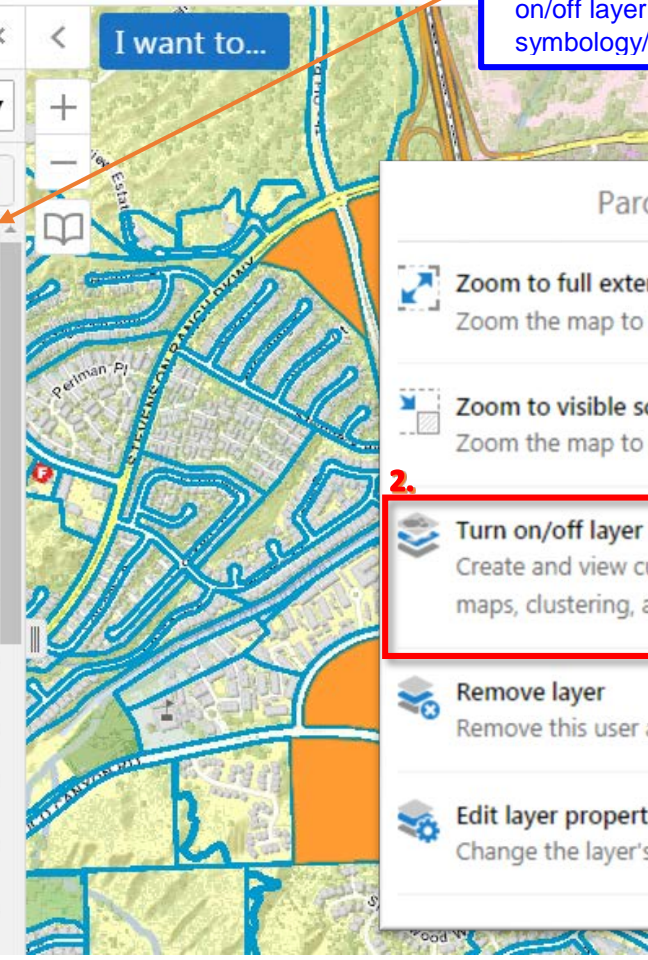
Pictometry / Google Maps Add Layers Upload Data Layer Catalog Print to PDF Export Display Map Images

Layers

All Available Layers

Filter Layers... Filter

- Parcels_within_Radius
- Woolsey Fire Perimeter
- Operational Layers
 - GIS Layers
 - Administrative Layers and Districts
 - Environmental Resources
 - Grids
 - Land and Building Outlines
 - Land and Water Features
 - Permit Activity
 - Projects/Other
 - Public Safety



Optional: To change the symbology after a layer has been added, first choose the arrow to see other available options. Second, click "Turn on/off layer visualizations" to update the symbology/color.

Parcels_within_Radius

- Zoom to full extent
Zoom the map to the full extent of the layer.
- Zoom to visible scale
Zoom the map to a scale where the layer is visible.
- Turn on/off layer visualizations
Create and view custom layer visualizations such as heat maps, clustering, and layer styles.
- Remove layer
Remove this user added layer from the map.
- Edit layer properties
Change the layer's name or other properties.