

How to Create Graphics & Export to Make Features (Points/Lines/Polygons)

How to create “Points, Lines and/or Polygons” to add to the map.

1. Start by clicking on the “Draw” tab.

2. Choose the type of item you want to add to the map. Here, the “Line” tool is the active tool.

INFO ONLY: Note the instructions on the yellow banner. Now, click on the locations you’re interested in and double-click to finish.

3A. Click once to start.

3B. Click once for a corner.

3C. Double-Click to finish.

Click or tap locations along the map to create a line. Double click/tap to finish.

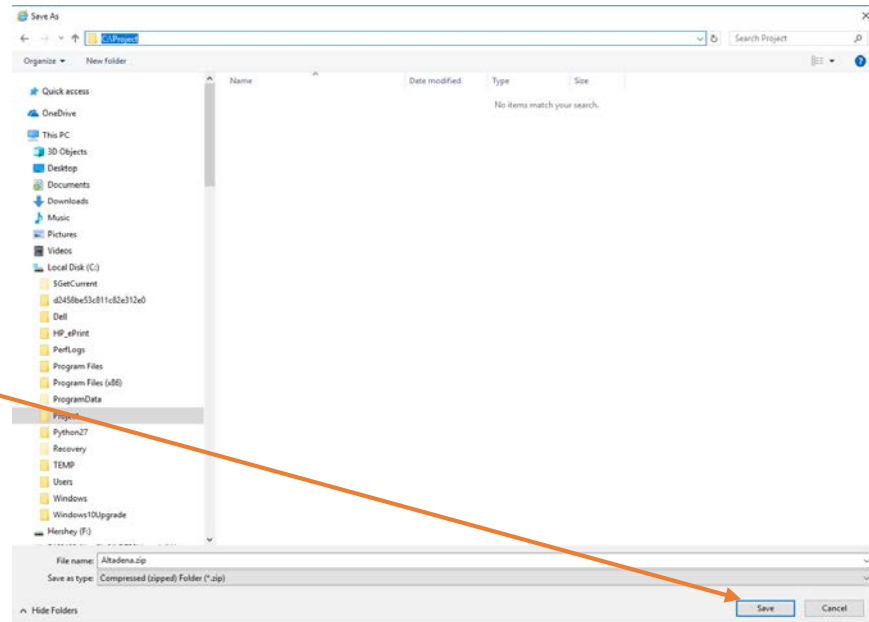
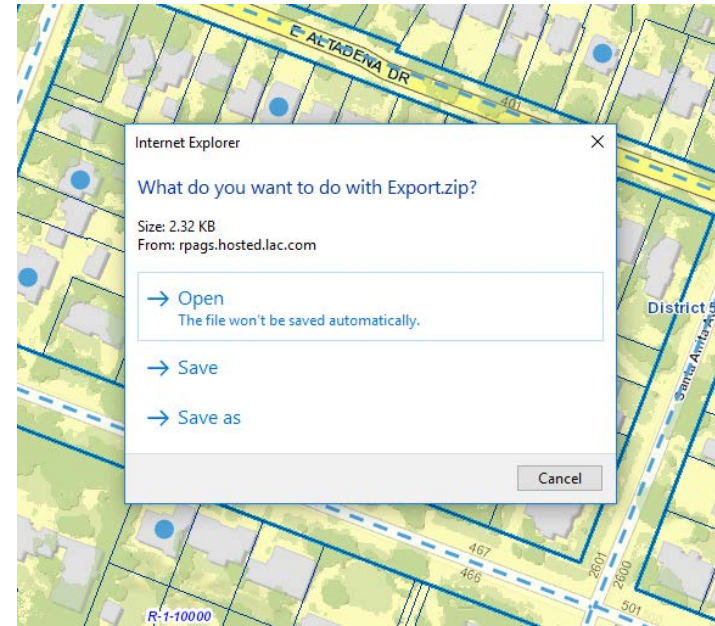
The screenshot displays the GIS-NET web application interface. At the top, the header reads "GIS-NET Planning & Zoning Information for UNINCORPORATED L.A. County". Below the header is a navigation menu with options: "Navigation", "Find", "Draw", "Measure", "Tasks", "Links", and "Help". The "Draw" menu is active, showing various drawing tools: Text, Point, Line, Freehand, Freehand Shape, Ellipse, Circle, Polygon, Rectangle, Enable Snapping, Select Snapping, Style, Select and Buffer, Clear Buffer, Edit, Erase, Clear, Export Drawings, and Plot Coordinates. An orange arrow points from the "Export Drawings" icon to a blue callout box containing the text: "4. Once you've created your features, click on the 'Export Drawings' tool." The main map area shows a street grid with several blue-outlined polygonal features drawn over it. A search bar at the top of the map contains the text "I want to...". On the left side, there is a "Layers" panel with a "Filter Layers..." section and a list of layers. The "Operational Layers" section is expanded, showing a list of layers with checkboxes: "Operational Layers", "GIS Layers", "Administrative Layers and Districts", "Environmental Resources", "Grids", "Land and Building Outlines", "Land and Water Features", "Permit Activity", and "Projects/Other". Under "Projects/Other", several layers are listed with checkboxes: "CA High Speed Rail - DRAFT", "CDC - Public Housing Sites", "Certificate of Exception", "CEQA - High Quality Transit Area 1/2 mile buffer (SCAG)", and "CEQA - High Quality Transit Area 1/4". At the bottom of the map, there is a scale bar showing "Scale 1: 2,257" and a "Go" button. A scale bar below it shows "0 100 200ft". In the bottom right corner, there is a footer: "LA County | DRP | City of Pasadena, Bureau of Land Management". A white dialog box with a grey border is overlaid on the map. The dialog box has a title bar that says "Download '.shp' file" and a close button (X). The main text of the dialog box reads: "The '.shp' file is about to be downloaded. Confirm?". At the bottom right of the dialog box are two buttons: "OK" and "Cancel". An orange arrow points from the "OK" button to a blue callout box containing the text: "5. You'll see the 'Download .shp file' pop up box. Click on the OK button."

INFO ONLY: You now have the option of doing one of the following three things.

Open: You can choose "Open" which will allow the system to save the zipped folder/files in a temporary location....or....

Save: You can choose "Save" which will allow the system to save the zipped folder/files in your "C:\Users\e987654\Downloads\" location....or....

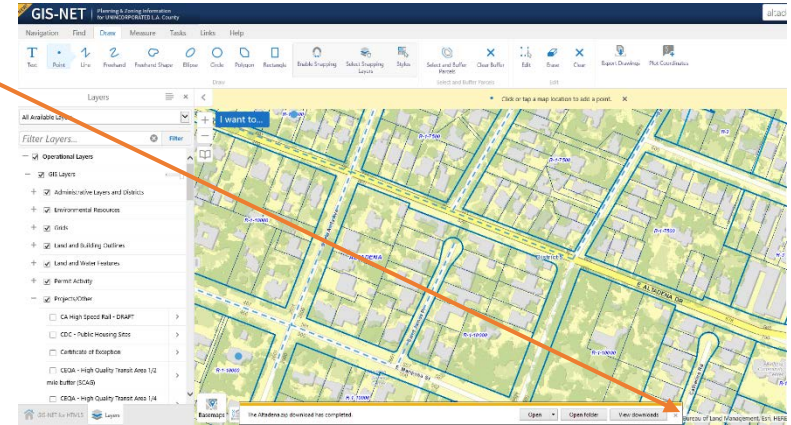
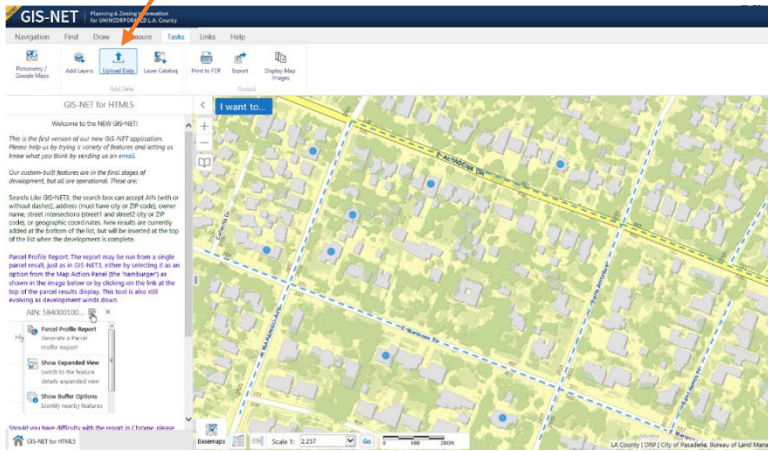
Save as: You can choose the "Save as" option which will allow you to create/choose the location where you want to save the zipped folder/files. You'll also be able to name the output however you wish which will help in working with it.



6. It is recommended that you choose the "Save As" option. Find the location where you want to store the file, give it a name that will help you remember what it is, and click the button shown to store it.

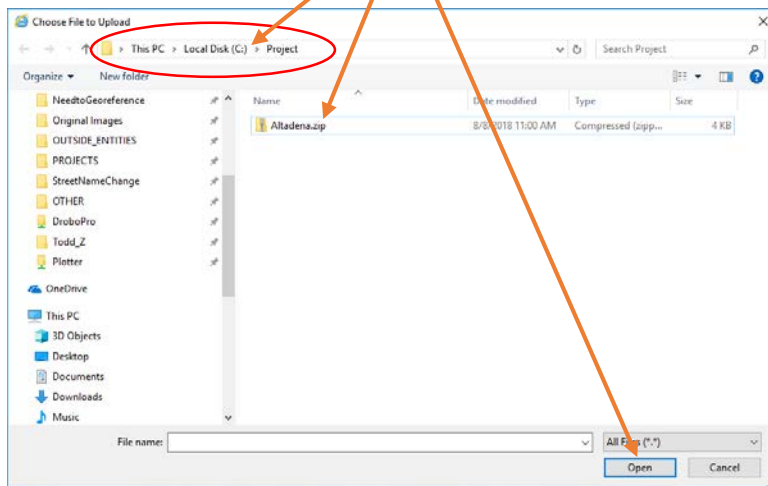
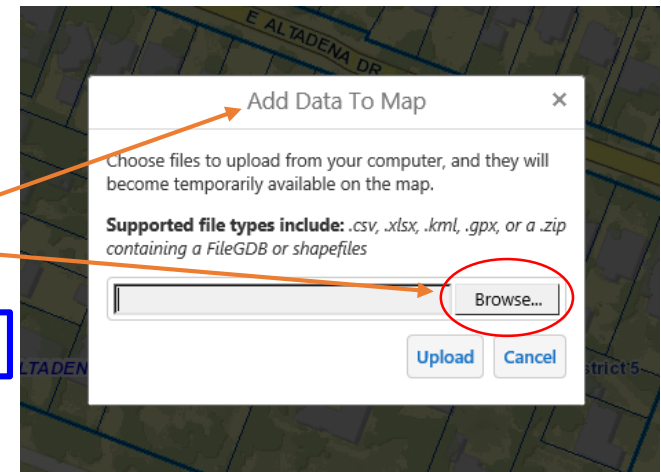
6. Close the “Download has completed” box at the bottom of the screen.

7. Now, go to the “Upload Data” button under the “Tasks” tab.

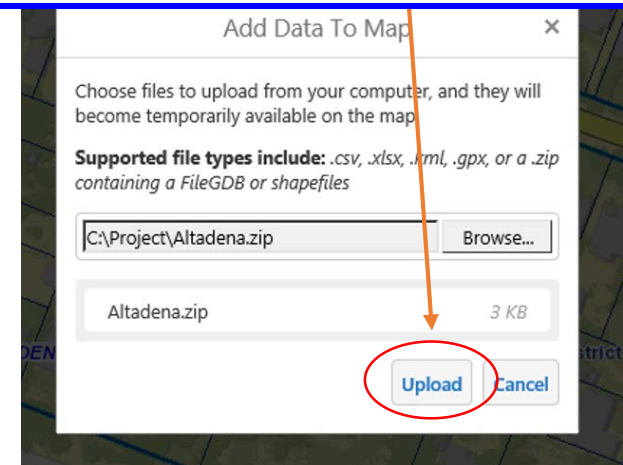


8. You’ll now see the “Add Data to Map” window, click on the “Browse” button.

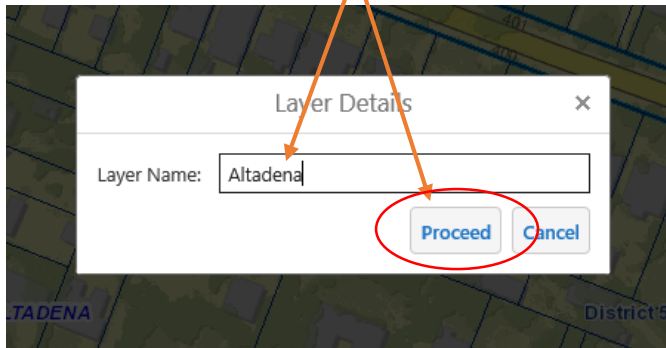
9. Navigate to your zipped folder location, select your file, and click on the “Open” button.



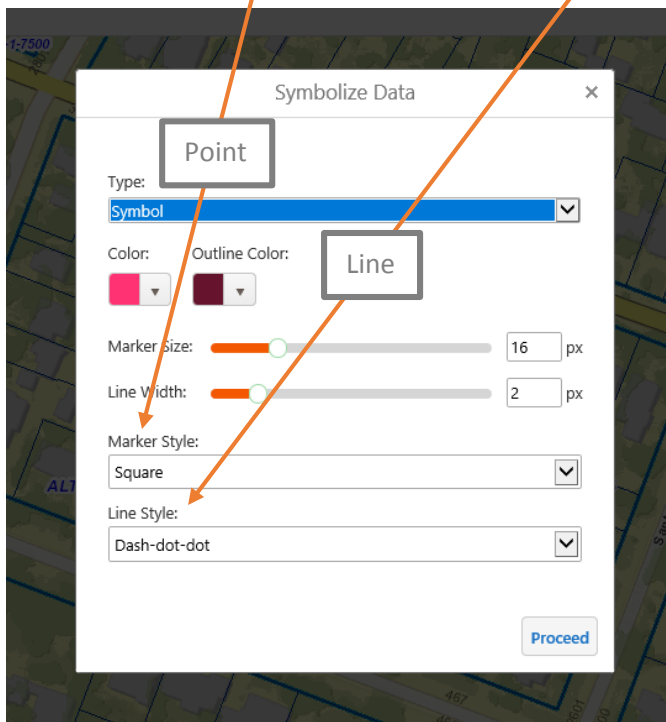
10. The “Add Data to Map” window will return, and it will show the path to the file along with the name of the file. Click on the “Upload” button.



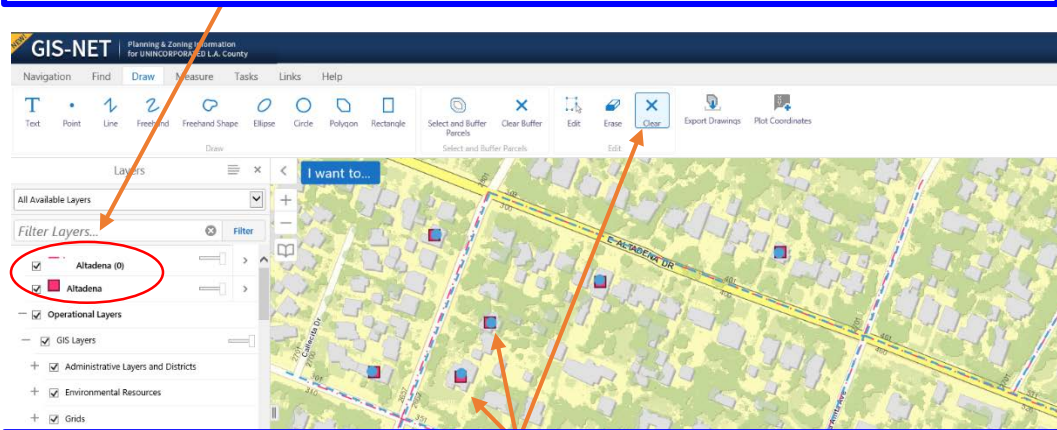
11. You'll now see the "Layer Details" window where you can enter an alias name for your file (or leave it as is). When finished, click on the "Proceed" button.



12. Next, you'll see the "Symbolize Data" window. Here you'll have the chance to change the styles/colors of your point ("Marker") and line features.



13. Your features will now load at the top of the layer list. The line features in this example are shown as “Altadena (0)”. The point features are shown as “Altadena”.



14. The graphics that were used to create them can still be seen in blue on the map. Remove the graphics by going to the “Draw” tab and then click on the “Clear” button.



15. The “Clear All” window will appear. Click on the “OK” button. Your end-product, when the graphics are removed, will look similar to the map on the right.

