

# How to Buffer

Please note that there are three different ways to buffer in this application. This write-up goes over each of those, and the title in the text boxes identify each method as follows:

- Select and Buffer Parcels Tool
- Buffer using 'Find' Tool
- Buffer from 'Identify Results'

The screenshot displays the GIS-NET application interface. The top navigation bar includes 'Navigation', 'Find', 'Draw', 'Measure', 'Tasks', 'Links', and 'Help'. The 'Draw' menu is active, showing various drawing tools. The 'Select and Buffer Parcels' tool is selected, and the left-hand panel is titled 'Step 1: Select Parcels'. This panel contains instructions: 'Please make a selection of parcels for the report. Define your custom geometry by choosing one of the tools below, and selecting an area on the map.' Below the instructions are four selection tool icons: a single dot, a cluster of three dots, a line, and a polygon. The 'multiple non-contiguous' selection tool (three dots) is highlighted with a red box. A 'Submit' button is also highlighted with a red box. An orange arrow points from the 'Submit' button to a blue-bordered text box. The text box contains the following instructions:

**'Select and Buffer Parcels Tool'.**

1. Activate the tool under the 'Draw' menu.
2. You are then given the options on the left-hand panel whether you want to select a single parcel, multiple non-contiguous parcels, or use a shape to select parcels. Here we are using 'multiple non-contiguous' selection. Hit the 'Submit' Button and you'll get a brief instruction on what to do next.

The main map area shows a residential street grid with several parcels highlighted in blue. The map includes street names like 'Harvestmoon St' and 'Fairgrove Ave', and parcel numbers like '15901', '15907', '15927', '16001', '16000', '16001', '16000', '16001', '16000', '16001', '16000'. The bottom status bar shows 'Scale 1: 2,257' and a scale bar from 0 to 200ft. The bottom right corner of the map area contains the text 'LA County | Bureau of Land Management, Esri, HERE, Garmin, INCREMENT P, NGA, USGS'.

**GIS-NET** Planning & Zoning Information for UNINCORPORATED L.A. County

Navigation Find Draw Measure Tasks Links Help

Text Point Line Freehand Freehand Shape Ellipse Circle Polygon Rectangle Select and Buffer Parcels Clear Buffer Edit Erase Clear Export Drawings Plot Coordinates

Step 1: Select Parcels

Please make a selection of parcels for the report.  
Define your custom geometry by choosing one of the tools below, and selecting an area on the map.

Please draw a geometry on the map to select parcels.

Submit

Select several points on the map. Double-click or tap to finish.

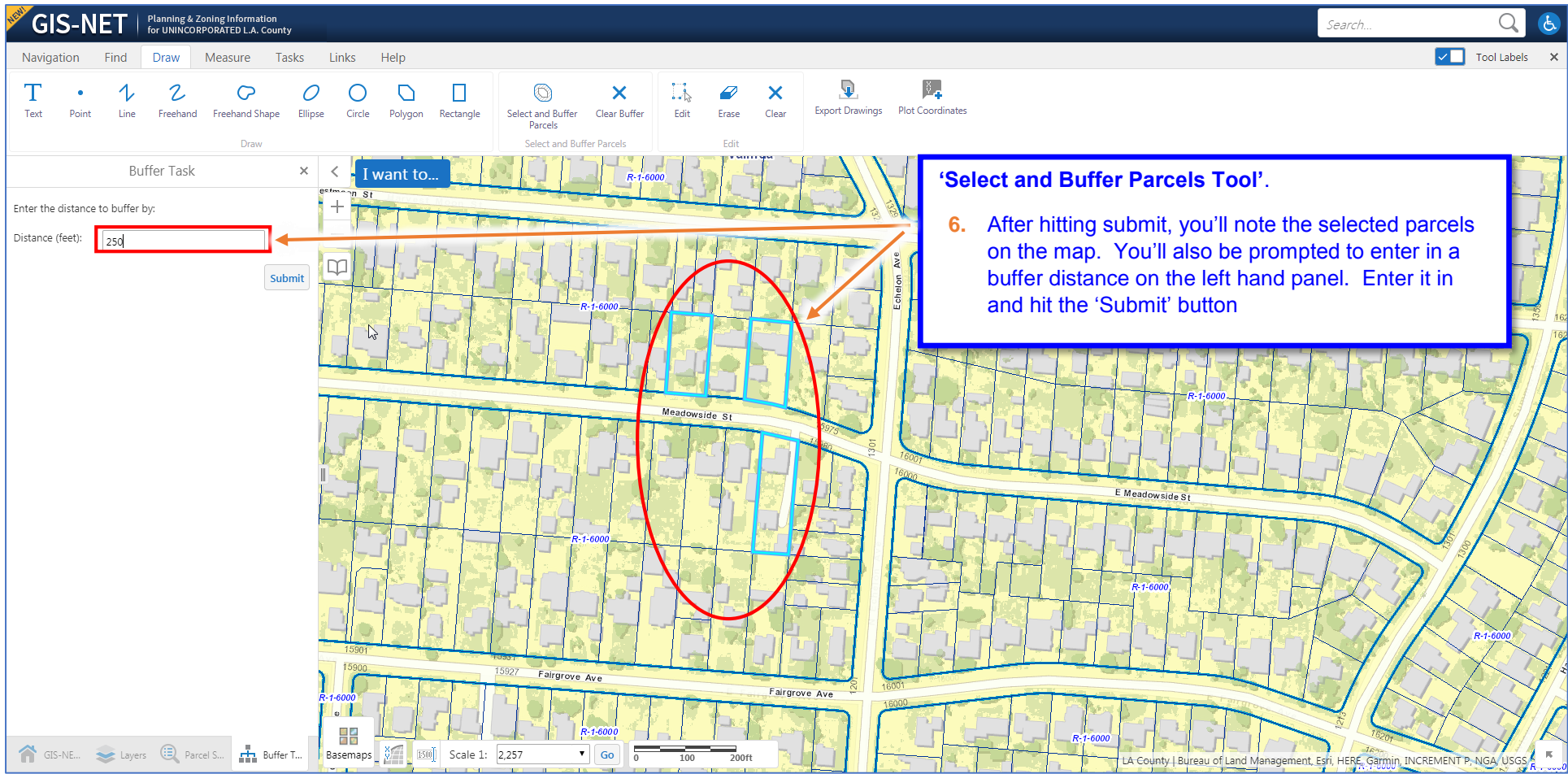
I want to...

**'Select and Buffer Parcels Tool'.**

3. As mentioned in step 2, you'll now get a brief instruction on what to do next in the left-hand panel, and also on the top yellow banner.
4. Digitize a series of points, and on the final point, double-click as instructed in the top yellow banner.
5. After digitizing the points, you'll get a message on the left-hand panel – 'Geometry Captured'. Hit 'Submit'

Scale 1: 2,257 0 100 200ft

LA County | Bureau of Land Management, Esri, HERE, Garmin, INCREMENT P, NGA, USGS



**GIS-NET** Planning & Zoning Information for UNINCORPORATED L.A. County

Navigation Find Draw Measure Tasks Links Help

Text Point Line Freehand Freehand Shape Ellipse Circle Polygon Rectangle Select and Buffer Parcels **Clear Buffer** Edit Erase Clear Export Drawings Plot Coordinates

Parcel Selection (3) I want to...

	AIN: 8254025017, Owner: LOPEZ,JAIME JR
	AIN: 8254025019, Owner: SANDOVAL,MITCHEL W
	AIN: 8254027010, Owner: ESPINOZA,ROSALBA

7. The buffer is drawn and the map extent is centered on that buffer area. The three highlighted parcels are also shown in the 'Parcel Selection' box on the left-hand panel. (NOTE: This tool will not select other parcels or layers within the buffer).

8. To remove the buffer, select the 'Clear Buffer' tool in the draw menu.

LA County | Bureau of Land Management, Esri, HERE, Garmin, INCREMENT P, NGA, USGS

**GIS-NET** Planning & Zoning Information for UNINCORPORATED L.A. County

Navigation Find Draw Measure Tasks Links Help

Point Freehand **Line** Polygon Rectangle **Disable Buffering** Enable Add Results Enable Subtract Results Enable Snapping Select Snapping Layers Identifiable Layers Query Filter View Charts

Buffer Options

Distance: 500  
Units: Feet (ft)  
 Write to Drawing Layer

I want to...

To learn what's there, draw a line of interest along the map. Double-click/tap to finish. Note: Buffering is active. A buffer of 500 Feet (ft) will be applied...

**'Buffer using Find Tools'**

9. You can also enable buffering while using the array of 'Find' tools by selecting one and then selecting 'Enable Buffering'
10. You will then be prompted to enter in a buffer distance on the left-hand panel, and you will also get a yellow banner on top with some instructions. In this case we will use the line tool.
11. Notice by default that the checkbox to 'Write to Drawing Layer' is checked. This means that whatever buffer is created, it will be copied to a drawing layer (same as if you drew a shape using the drawing tools). For more info on the drawing layer, click [here](#) for the 'How To'.

Scale 1: 4,514 0 150 300ft

LA County | Bureau of Land Management, Esri, HERE, Garmin, INCREMENT P, NGA, USGS

**GIS-NET** Planning & Zoning Information for UNINCORPORATED L.A. County

Navigation Find Draw Measure Tasks Links Help

Point Freehand Line Polygon Rectangle Disable Buffering Enable Add Results Enable Subtract Results Enable Snapping Select Snapping Layers Identifiable Layers Query Filter View Charts

Buffer Options

Distance: 500  
Units: Feet (ft)  
 Write to Drawing Layer  
Clear Cancel Continue

To learn what's there, draw a line of interest along the map. Double-click/tap to finish. Note: Buffering is active. A buffer of 500 Feet (ft) will be applied...

I want to...

12. Buffer using Find Tools'.  
12. Begin digitizing your shape, and double click when finished (again, see yellow banner at the top)

Scale 1: 4,514  
0 150 300ft

LA County Bureau of Land Management Esri, HERE, Garmin, INCREMENT P, NGI, USGS

**GIS-NET** Planning & Zoning Information for UNINCORPORATED L.A. County

Navigation Find Draw Measure Tasks Links Help

Point Freehand Line Polygon Rectangle Disable Buffering Enable Add Results Enable Subtract Results Enable Snapping Select Snapping Layers Identifiable Layers Query Filter View Charts

Identify Results (198)

Drawing 1

- Zoning: A-1-10000
- Zoning: A-1-10000
- Zoning: R-1-6000
- Zoning: R-1-6000
- Zoning: R-1-6000
- Zoning: R-1-6000
- Zoning: R-1-6000
- Zoning: R-1-6000
- Zoning: R-1-6000
- Zoning: R-1-6000
- Zoning: R-A-7500

AIN: 8254005001, Owner: ASTRO, FILEMON S AND AYON MORALES, MARIA J

AIN: 8254005062, Owner: OC...A, ROSA M

AIN: 8254006022, Owner: PERE...OSE A AND MARIA P TRS PEREZ TRUST

AIN: 8254006014, Owner: CALIFOR... HOUSING FOUNDATION

AIN: 8254006016, Owner: GOMEZ, F... G AND

Displaying 1 - 50 (Total: 198)

Page 1 of 4

GIS-NE... Layers Buffer ...

**'Buffer using Find Tools'.**

13. When completed, you'll see a yellow buffer that buffered with the specified distance from the shape you digitized.
14. On the left-hand panel, you will see the visible layers that intersect with that buffer
15. It is important to note that there is a limit of 50 features that can be displayed on the left-hand panel, so not all the features show up there nor in the map.

**GIS-NET** Planning & Zoning Information for UNINCORPORATED L.A. County

Navigation Find Draw Measure Tasks Links Help

Point Freehand Line Polygon Rectangle Disable Buffering Enable Add Results

Identify Results (198)

AIN: 8254024023, Owner: LOPEZ,ROBERT J AND KATHERINE

AIN: 8254026015, Owner: FLORES,FRED V AND FLORES,MARCELLA S

AIN: 8254026032, Owner: ALVARADO,ADELINA AND MORALES,BALBINO AND SILVIA

AIN: 8254005005, Owner: LOPEZ,CARMEN AND ZELERINO

AIN: 8254005022, Owner: SHEN,YI YU

AIN: 8254005023, Owner: SANCHEZ,GLADYS C

AIN: 8254006015, Owner: FLORES,JOE AND GINA

AIN: 8254006012, Owner: MAGANA,GUADALUPE C TR GUADALUPE C MAGANA TRUST

AIN: 8254006031, Owner: QUIJADA,LUIS AND DALILA

AIN: 8254006027, Owner: LOPEZ,PABLO AND GABRIELA

AIN: 8254007040, Owner: FURNESS,MARIA E

AIN: 8254007049, Owner: WIGGINS,GARY P AND JUDITH A

AIN: 8254007078, Owner: CYSNEROS,BYRON AND MAYRA

Displaying 51 - 100 (Total: 198)

Page 2 of 4

Map showing streets: Fellowship St, MAPLEGROVE ST, Harvestmoon St, Meadowside St, Bannock Ave, Griffith Ave, Walnut Ave, E Meadside St, Allerton Ave, E Colton Ave.

Scale 1: 4,514

0 150 300ft

LA County Bureau of Land Management, Esri, HERE, Garmin, INCREMENT P, NGA, USGS, F...

### 'Buffer using Find Tools'

16. You can click through the arrows at the bottom of the left-hand panel to scroll through all the results. Or, if you want all the resulting selected layers, you can click the 'hamburger' tool to export them all as shapefiles, spreadsheets, etc.
17. You will also notice that the buffer is actually a 'draw layer' as was indicated in step 11 above. For more information about changing the color of that draw layer, please click [here](#).
18. If you want to remove the buffer from the 'drawing layer', go to 'Draw' then select 'Erase' or 'Clear' buttons.
19. If you no longer want buffers generated from the 'Find' tools, you will need to 'disable buffering' by clicking the 'Find' Group, selecting one of the tools, then selecting 'Disable Buffering'

Draw Measure Tasks Links Help

Freehand Freehand Shape Ellipse Circle Polygon Rectangle Select and Buffer Parcels Clear Buffer Edit Erase Clear

Draw

Select and Buffer Parcels

Edit

Navigation Find Draw Measure Tasks Links

Point Freehand Line Polygon Rectangle Disable Buffering

Disable Buffering



**GIS-NET** Planning & Zoning Information for UNINCORPORATED L.A. County

Navigation Find Draw Measure Tasks

Text Point Line Freehand Freehand Shape Ellipse

Draw

Identify Results (2)

- Zoning: R-1-6000
- AIN: 8254025010

View results in table format

Show Buffer Options

Export results to CSV

Export results to XLSX

Export results to Shapefile

Open Saved Results

Save Results

Combine Results

Displaying 1 - 2 (Total: 2)

Page 1 of 1

GIS-NET for H... Layers Identify Result...

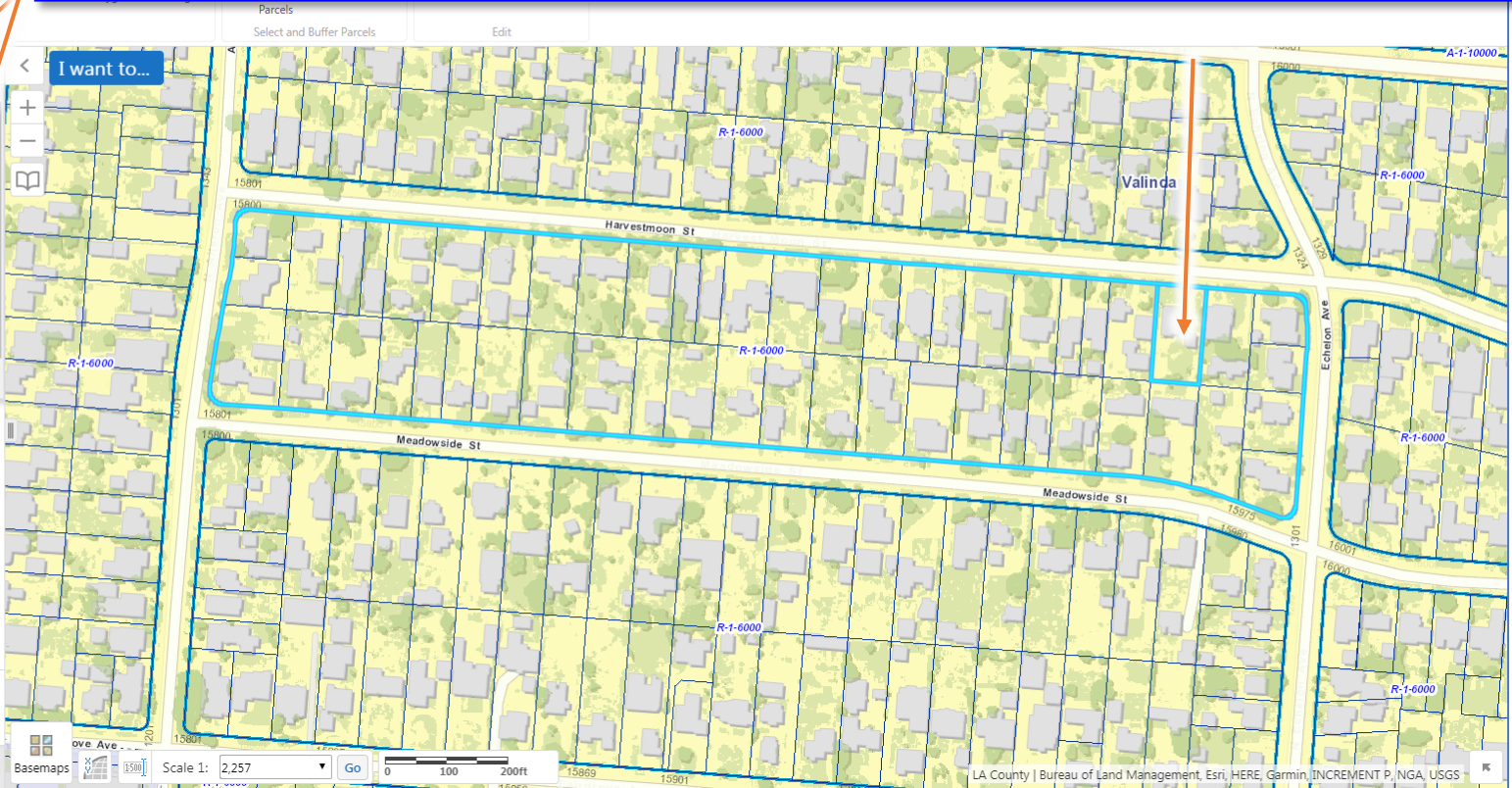
Basemaps Scale 1: 2,257 Go 0 100 200ft

LA County | Bureau of Land Management, Esri, HERE, Garmin, INCREMENT P, NGA, USGS

**'Buffer from Identify Results'.**

20. You can also buffer a parcel from the 'Identify Results' window on the left-hand panel after doing an identify (in this case, zoning, land use, and a parcel are selected – visible layers that intersected that clicked point).

21. Clicking on the 'hamburger' icon on the left-hand panel will show that there is a 'Show Buffer Options' choice.



**'Buffer from Identify Results'.**

- 22. In the Buffer Options window, you can enter in the buffer distance and whether you want the buffer to be in the drawing layer (see steps 9-11 above).
- 23. You will note that the buffer is generated from the largest selected polygon (in this case, the zoning polygon). The resulting buffer selects from all the visible layers as noted in step 14 above.

**NEW! GIS-NET** Planning & Zoning Information for UNINCORPORATED L.A. County

Navigation Find Draw Measure Tasks

Text Point Line Freehand Freehand Shape Ellipse

Draw

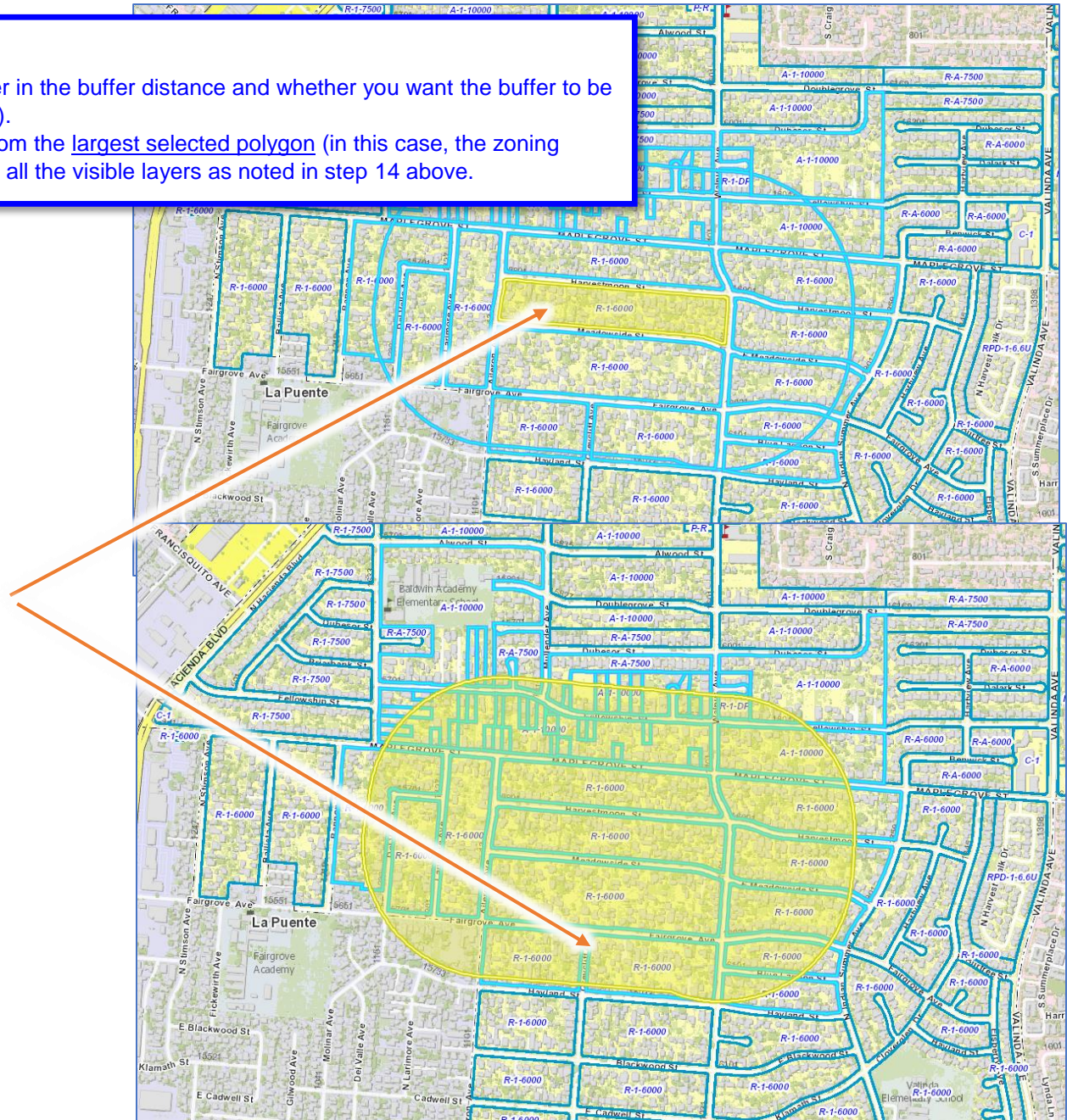
Buffer Options

Distance: 1000

Units: Feet (ft)

Write to Drawing Layer

Clear Cancel Continue



**'Buffer from Identify Results'.**

24. If you only want to buffer from an identified parcel, then you need to select the parcel from the 'Identify Results' window on the left.
25. Once you select that buffer, follow the procedure identified in steps 22 and 23 above to get only the buffer for a parcel.

